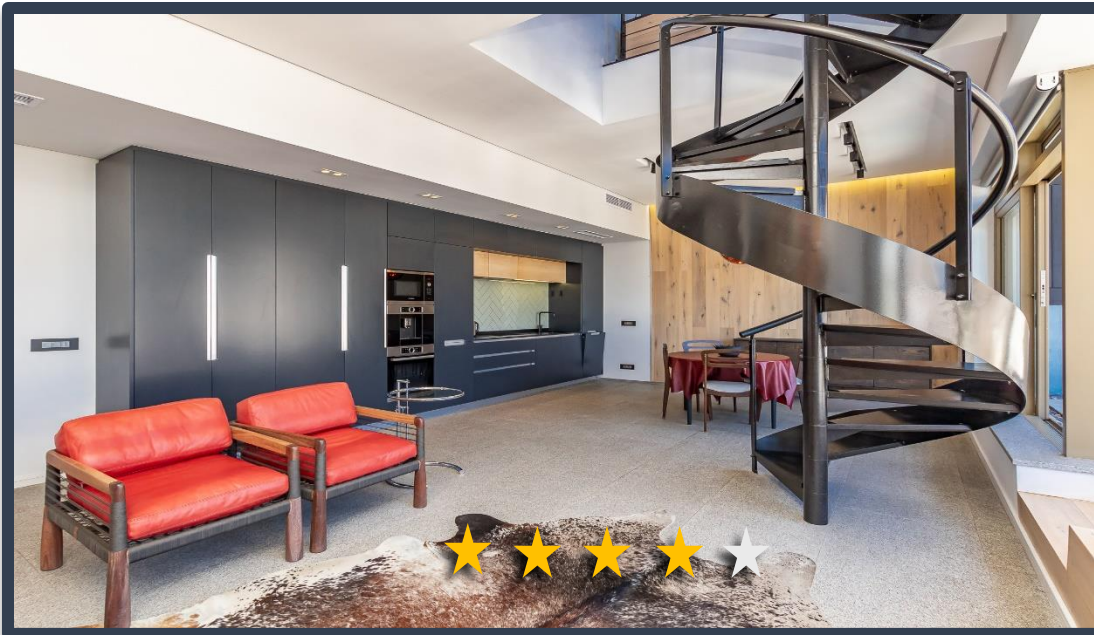


CARTWRIGHTS CORNER

2304



- DESCRIPTION:** One Bedroom, One bathroom Apartment
- VIEWS:** This apartment is situated on the 5th floor of the Cartwrights Corner building with views of Parliament Street.
- SLEEPS:** Sleeps 2 (1 x Queen size bed)
- AUDIO:** Smart TV
- Air-conditioning:** Central heating and cooling (Bedroom and lounge)
- INTERNET:** Complimentary uncapped Wi-Fi
- PARKING:** Secured, assigned parking bay within building

ADDITIONAL SERVICES & FEATURES INCLUDE:

The apartment offers: 2-seater dining room table, microwave, hob/oven, washer/dryer combination, Selection of cooking utensils and cutlery.

The building offers: 24/7 front desk, 24-hour security, indoor swimming pool and a well-equipped gym.

ITC provides housekeeping services, concierge services, 24-hour on call contact number, and premium linen and towels.

ATTRACTIONS

Cartwright's Corner is centrally located within the CBD. Museums, open-air markets, shopping, and restaurants are within walking distance from this beautiful building.

Company Gardens, Parliament, MyCiti station and CTICC are all within walking distance.

TRANSPORT

The MyCiti bus offers airport transfers and a safe commute around Cape Town. The Airport is approximately 20 minutes away from Cartwright's Corner.

