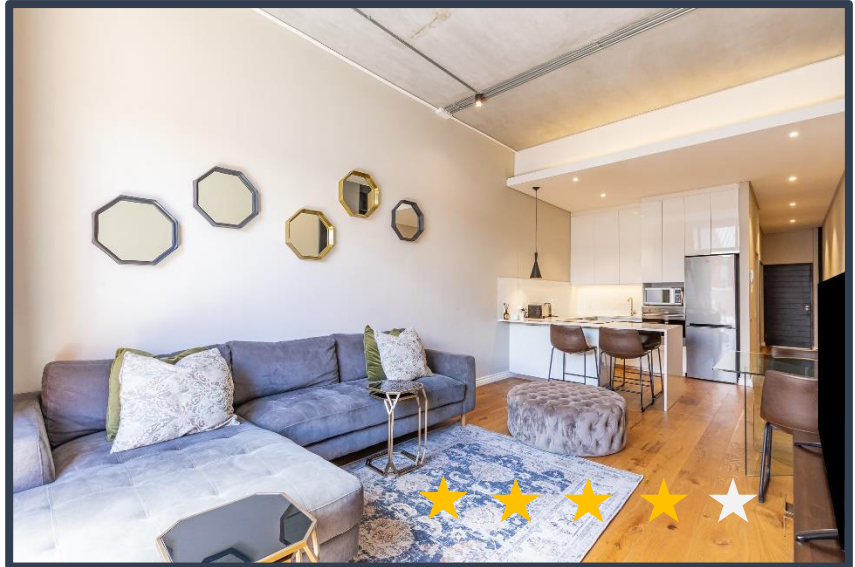


# DOCKLANDS

219



- DESCRIPTION:** One Bedroom, One bathroom Apartment
- VIEWS:** A unit situated on the 2<sup>nd</sup> floor of the Docklands with view towards Table Mountain
- SLEEPS:** Sleeps 2 (1 x Queen size bed)
- AUDIO:** Smart TV
- Air-conditioning:** Central heating and cooling (bedroom only)
- INTERNET:** Complimentary Uncapped Wi-Fi
- PARKING:** Secured, assigned parking bay within building

#### ADDITIONAL SERVICES & FEATURES INCLUDE:

The interior is an elegant combination of rich textures, colors, and comfort creating a very modern industrial feel. The counter provides seating for 4. The fully equipped kitchen includes a microwave, Smeg stove, washing machine & fridge and a selection of cooking utensils, cutlery & crockery. The building offers 24-hour security and direct access to a rooftop swimming pool.

ITC offers: Premium linen and towels, housekeeping services, Concierge services and a 24-hour on call number.

#### ATTRACTIONS

Situated on Prestwich Street, in the Foundry area. The Docklands is conveniently located close to the V&A Waterfront, Cape Town Stadium Silo District and Cape Quarter, making it very central for both business and leisure travel. A variety of restaurants are within walking distance from Docklands.

#### TRANSPORT

The MyCiti bus offers airport transfers and a safe commute around Cape Town. The Airport is approximately 20 minutes away from Docklands. ITC can arrange an airport transfer on your behalf.