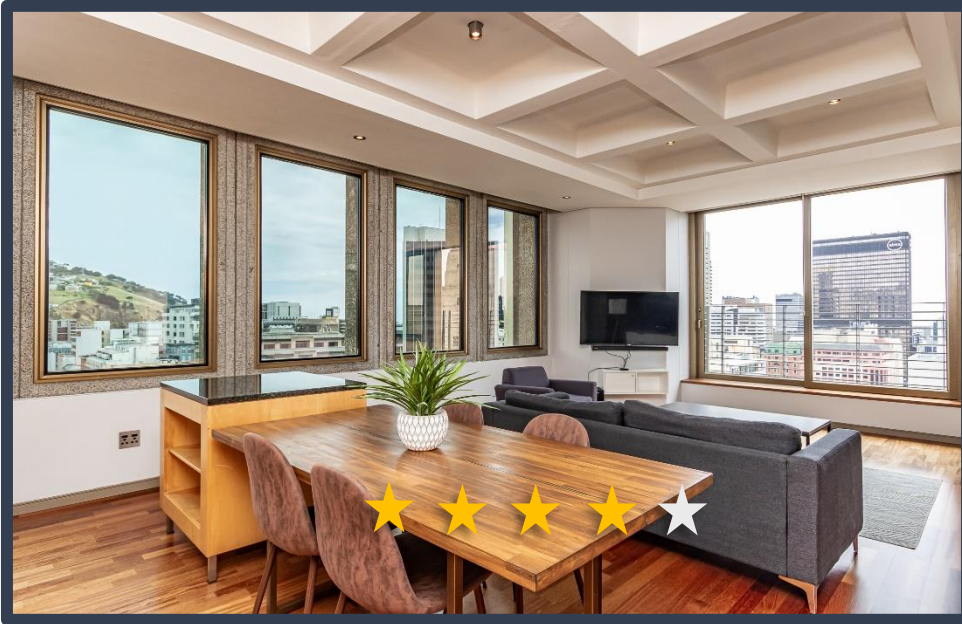


# CARTWRIGHTS CORNER

1406



**DESCRIPTION:** One Bedroom, One Bathroom Apartment

**VIEWS:** A unit situated on the 14<sup>th</sup> floor of the Cartwrights Corner building with views of Adderley Street.

**SLEEPS:** Sleeps 2 (1 x Queen size bed)

**AUDIO:** Smart TV

**AIR-CONDITIONING:** Central heating and cooling (Bedroom and lounge)

**INTERNET:** Complimentary Uncapped Wi-Fi

**PARKING:** Secured, assigned parking bay within building with remote.

**ADDITIONAL SERVICES & FEATURES INCLUDE:**

The apartment offers: Dining room table - seats 4, microwave, hob/oven, washer/dryer combination, Selection of cooking utensils and cutlery.  
 The building offers: 24/7 front desk, 24-hour security, indoor swimming pool and well-equipped gym.  
 ITC provides housekeeping services, concierge services, 24-hour on call contact number, premium linen and towels.

**ATTRACTIONS**

Cartwright's Corner is centrally located within the CBD. Museums, open-air markets, shopping, and restaurants are within walking distance from this beautiful building. Company Gardens, Parliament, MyCiti station and CTICC are all within walking distance.

**TRANSPORT**

The MyCiti bus offers airport transfers and a safe commute around Cape Town. The Airport is approximately 20 minutes away from Cartwright's Corner.

