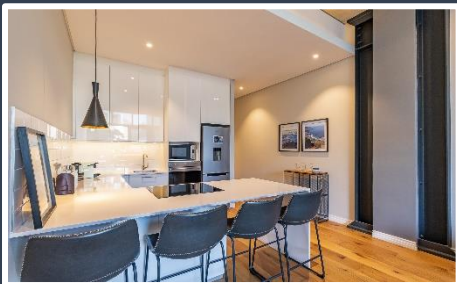


DOCKLANDS

212



DESCRIPTION:

One Bedroom, One bathroom Apartment

VIEWS:

A unit situated on the 2nd floor of the Docklands with view towards Table Mountain

SLEEPS:

Sleeps 2 (1 x Queen size bed)

AUDIO:

Smart TV

Air-conditioning:

Central heating and cooling (bedroom only)

INTERNET:

Complimentary Uncapped Wi-Fi

PARKING:

Secured, assigned parking bay within building

ADDITIONAL SERVICES & FEATURES INCLUDE:

The interior is an elegant combination of rich textures, colors, and comfort creating a very modern industrial feel. The counter provides seating for 4. The fully equipped kitchen includes a microwave, Smeg stove, washing machine & fridge and a selection of cooking utensils, cutlery & crockery. The building offers 24-hour security and direct access to a rooftop swimming pool.

ITC offers: Premium linen and towels, housekeeping services, Concierge services and a 24-hour on call number.

ATTRACTIONS

Situated on Prestwich Street, in the Foundry area. The Docklands is conveniently located close to the V&A Waterfront, Cape Town Stadium Silo District and Cape Quarter, making it very central for both business and leisure travel. A variety of restaurants are within walking distance from Docklands.

TRANSPORT

The MyCiti bus offers airport transfers and a safe commute around Cape Town. The Airport is approximately 20 minutes away from Docklands. ITC can arrange an airport transfer on your behalf.