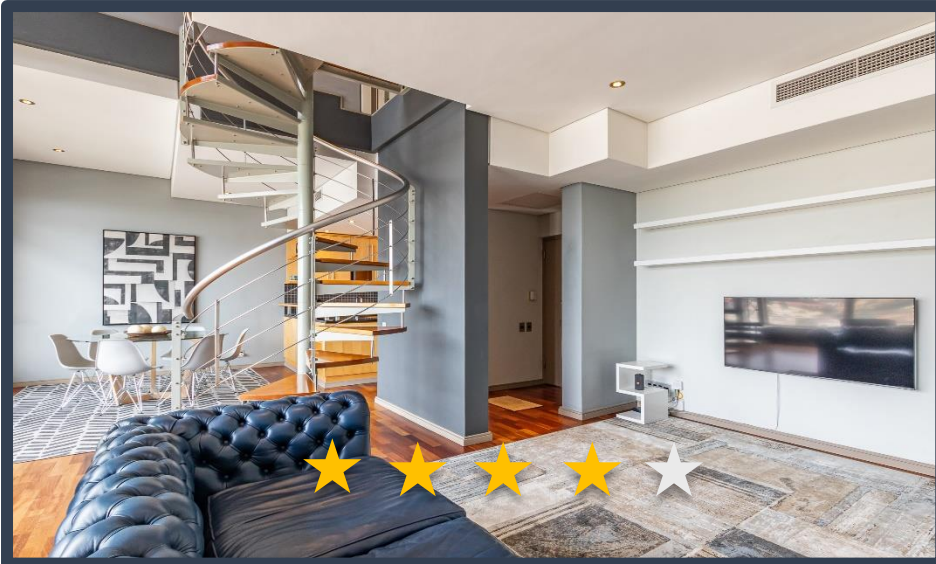


CARTWRIGHTS CORNER

2302



- DESCRIPTION:** Two Bedroom, Two Bathroom Apartment
- VIEWS:** A unit situated on the 23rd floor of the Cartwrights Corner building, with views of Table Mountain.
- SLEEPS:** Sleeps 4
Main Bedroom: 1 Queen Sized bed
Second Bedroom: 1 Queen Sized bed
- AUDIO:** Smart TV
- Air-conditioning:** Central heating and cooling (Bedroom and lounge)
- INTERNET:** Complimentary Uncapped Wi-Fi
- PARKING:** Secured, assigned parking bay within building with remote.

ADDITIONAL SERVICES & FEATURES INCLUDE:

The apartment offers: Dining room table - seats 2, microwave, hob/oven, washer/dryer combination, Selection of cooking utensils and cutlery.
The building offers: 24/7 front desk, 24-hour security, indoor swimming pool and well-equipped gym.
ITC provides housekeeping services, concierge services, 24-hour on call contact number, premium linen and towels.

ATTRACTIONS Cartwright's Corner is centrally located within the CBD. Museums, open-air markets, shopping, and restaurants are within walking distance from this beautiful building. Company Gardens, Parliament, MyCiti station and CTICC are all within walking distance.

TRANSPORT The MyCiti bus offers airport transfers and a safe commute around Cape Town. The Airport is approximately 20 minutes away from Cartwright's Corner.

