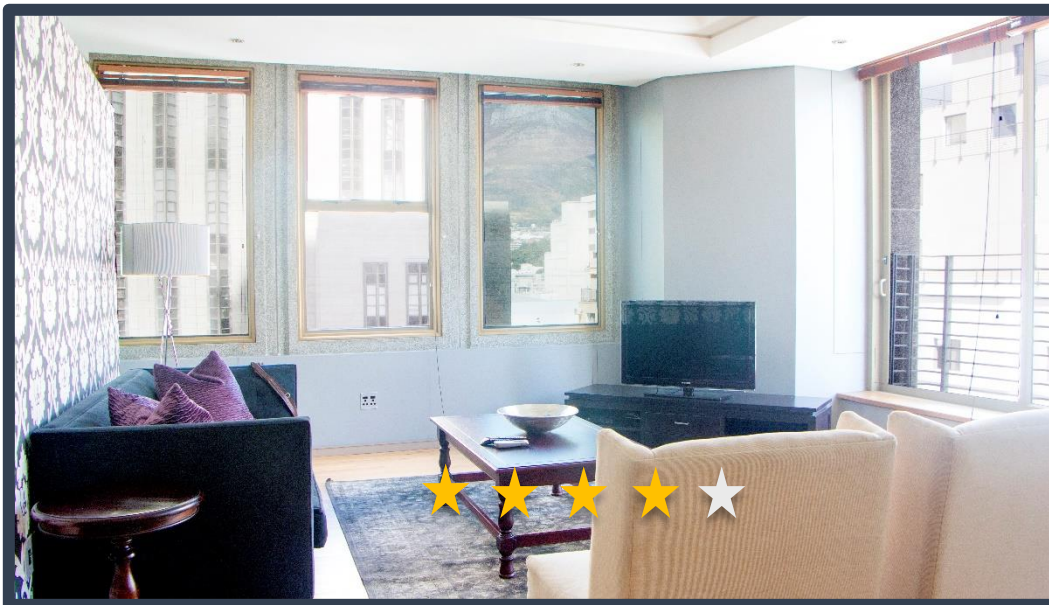


# CARTWRIGHTS CORNER



803

<b>DESCRIPTION:</b>	One Bedroom, One Bathroom
<b>VIEWS:</b>	A unit situated on the 8 <sup>th</sup> floor of the Cartwrights Corner building with views of Parliament Street.
<b>SLEEPS:</b>	Sleeps 2 (1 x Queen size bed)
<b>AUDIO:</b>	Smart TV
<b>Air-conditioning:</b>	Central heating and cooling (Bedroom and lounge)
<b>INTERNET:</b>	Complimentary Uncapped Wi-Fi
<b>PARKING:</b>	Secured, assigned parking bay within building with remote.
<b>ADDITIONAL SERVICES &amp; FEATURES INCLUDE:</b>	<p>The apartment offers: Dining room table - seats 2, microwave, hob/oven, washer/dryer combination and a selection of cooking utensils and cutlery.</p> <p>The building offers: 24/7 front desk, 24-hour security, indoor swimming pool and well-equipped gym.</p> <p>ITC provides housekeeping services, concierge services, 24-hour on call contact number, premium linen and towels.</p>
<b>ATTRACTIONS</b>	<p>Cartwright's Corner is centrally located within the CBD. Museums, open-air markets, shopping, and restaurants are within walking distance from this beautiful building.</p> <p>Company Gardens, Parliament, MyCiti station and CTICC are all within walking distance.</p>
<b>TRANSPORT</b>	<p>The MyCiti bus offers airport transfers and a safe commute around Cape Town. The Airport is approximately 20 minutes away from Cartwright's Corner.</p>

