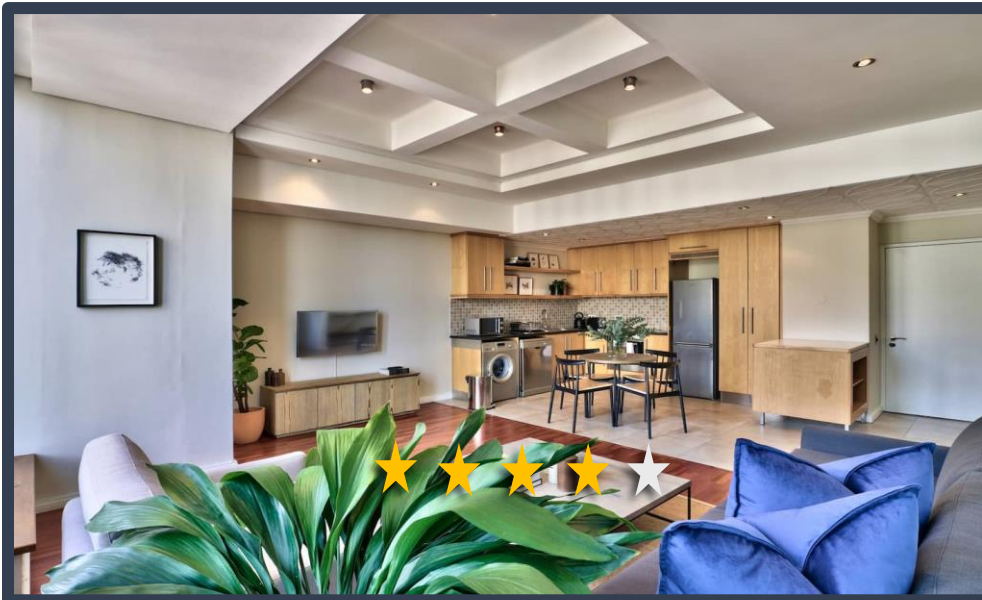


# CARTWRIGHTS CORNER

1302



- DESCRIPTION:** One Bedroom, One Bathroom
- VIEWS:** A unit situated on the 13<sup>th</sup> floor with views of Lower Table Mountain
- SLEEPS:** Sleeps 2 (1 x Queen size bed)
- AUDIO:** Smart TV with Netflix
- Air-conditioning:** Central heating and cooling (bedroom and lounge)
- INTERNET:** Complimentary Uncapped Wi-Fi
- PARKING:** Secured, assigned parking bay within building with remote.
- ADDITIONAL SERVICES & FEATURES INCLUDE:**  
The apartment offers: Dining room table - seats 4, microwave, hob/oven, washer/dryer combination, Selection of cooking utensils and cutlery.  
The building offers: 24/7 front desk, 24-hour security, indoor swimming pool and well-equipped gym.  
ITC provides housekeeping services, concierge services, 24-hour on call contact number, premium linen and towels.
- ATTRACTIONS** Cartwright's Corner is centrally located within the CBD. Museums, open-air markets, shopping, and restaurants are within walking distance from this beautiful building. Company Gardens, Parliament, MyCiti station and CTICC are all within walking distance.
- TRANSPORT** The MyCiti bus offers airport transfers and a safe commute around Cape Town. The Airport is approximately 20 minutes away from Cartwright's Corner.

