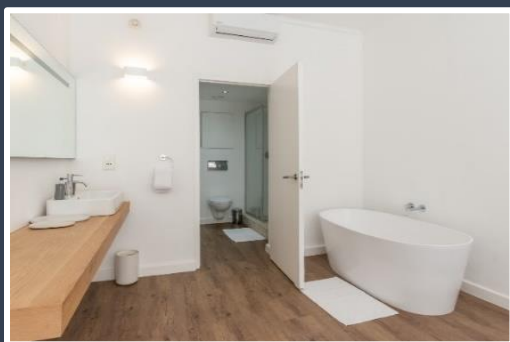
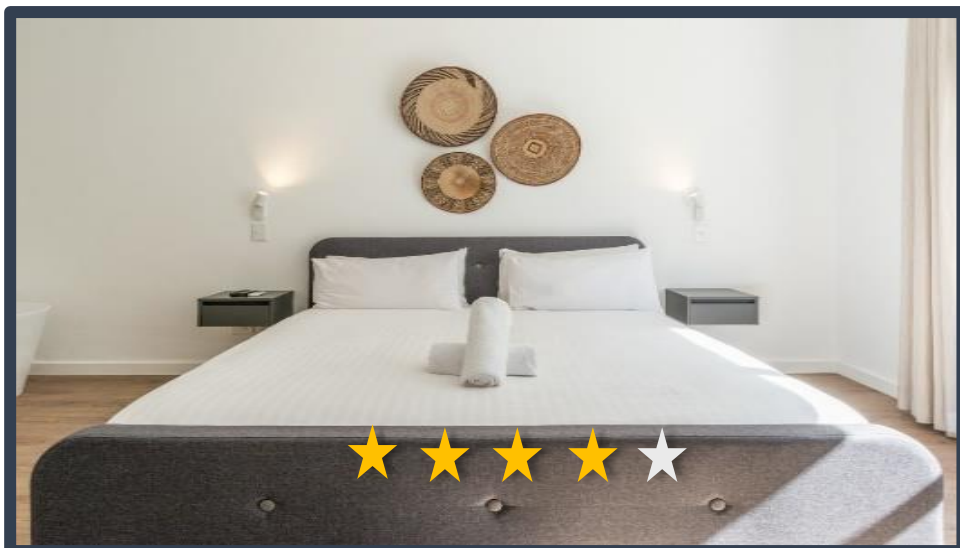


BIJOUX



DESCRIPTION: One Bedroom, One Bathroom apartment

VIEWS: A unit situated on the 6nd floor of The Adderley Residence building.

SLEEPS: Sleeps 2 (1 x King size bed)

AUDIO: Smart TV, with signed in Netflix

AIR-CONDITIONING: Central heating and cooling (Bedroom)

INTERNET: Uncapped Wi-Fi

PARKING: Secured, assigned parking bay within building

ADDITIONAL SERVICES & FEATURES INCLUDE:

The apartment has an assigned parking bay and provides easy access to a rooftop swimming pool, located in the complex. Dining room table - seats 4, The Kitchenette includes: Microwave, two plate stove, washing machine & bar fridge. Selection of cooking utensils and cutlery. The building offers a tag-controlled entry system, 24-hour security at garage entrance. ITC offers: Premium linen and towels Housekeeping services, Concierge services, 24 hours on call number.

ATTRACTIONS

Situated on Adderley Street Adderley Terrace is a block away from the famous Company Gardens offering beautiful morning walks and access to museums and Queen Victoria Road where South Africa's High Court is situated. The V&A Waterfront is a 1km away from Market House. It 7.5km from Table Mountain. For the desiring business traveller, the CTICC is within 1.9km from, your apartment.

TRANSPORT

The Cape Town International Airport is a 20.5km drive from the CBD with no traffic but can take up to an hour with traffic. ITC can arrange airport transfer on your behalf.