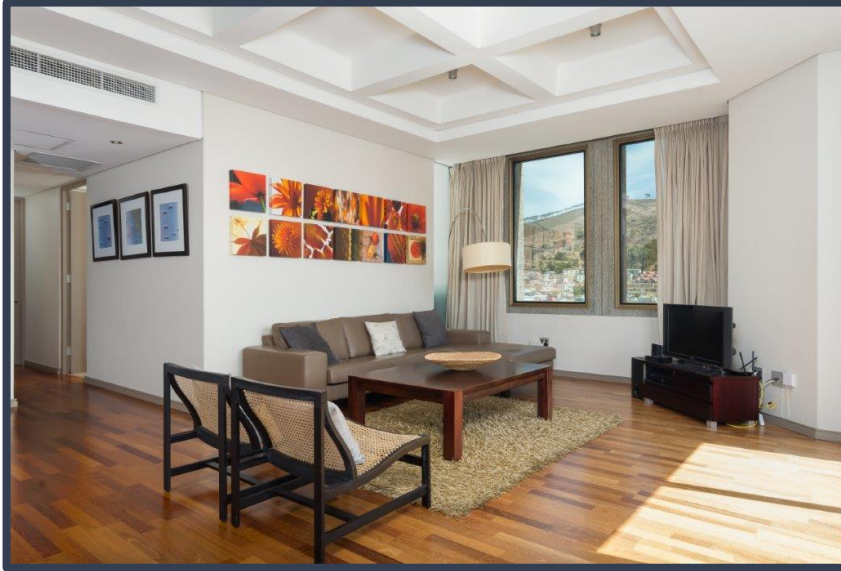


# CARTWRIGHTS CORNER



2104

## DESCRIPTION:

Two Bedroom, Two Bathroom Apartment

## VIEWS:

A unit situated on the 21<sup>st</sup> floor of the Cartwrights Corner building, with views of Table Mountain.

## SLEEPS:

Sleeps 4  
Main Bedroom: 1 Queen Sized bed (En-suite)  
Second Bedroom: 2 Single beds

## AUDIO:

Smart TV

## Air-conditioning:

Central heating and cooling (Bedroom and lounge)

## INTERNET:

Complimentary Uncapped Wi-Fi

## PARKING:

Secured, assigned parking bay within building with remote.

## ADDITIONAL SERVICES & FEATURES INCLUDE:

The apartment offers: Dining room table - seats 8, microwave, hob/oven, washing machine, selection of cooking utensils and cutlery.

The building offers: 24/7 front desk, 24-hour security, indoor swimming pool and well-equipped gym.

ITC provides housekeeping services, concierge services, 24-hour on call contact number, premium linen and towels.

## ATTRACTIONS

Cartwright's Corner is centrally located within the CBD. Museums, open-air markets, shopping, and restaurants are within walking distance from this beautiful building. Company Gardens, Parliament, MyCiti station and CTICC are all within walking distance.

## TRANSPORT

The MyCiti bus offers airport transfers and a safe commute around Cape Town. The Airport is approximately 20 minutes away from Cartwright's Corner.

